

KARTA KATALOGOWA

CATALOG CARD / DATENBLATT

PROFIL SKYLINE NAKŁADANY - do frontów bezuchwytowych z możliwością montażu taśmy LED

SKYLINE PROFILE - APPLIED - to the board for handleless fronts
with the possibility of mounting LED strips
AUFBAUPROFIL SKYLINE - für grifflose Fronten
mit Montagemöglichkeit von LED-Streifen

Kolor profilu:

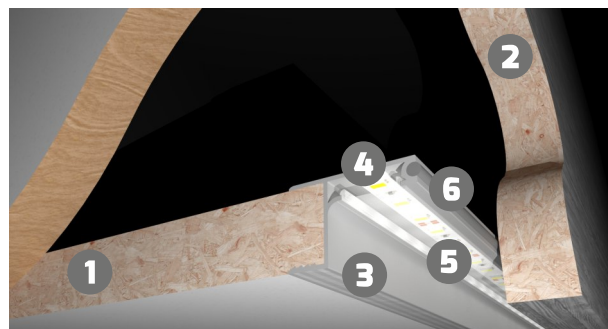
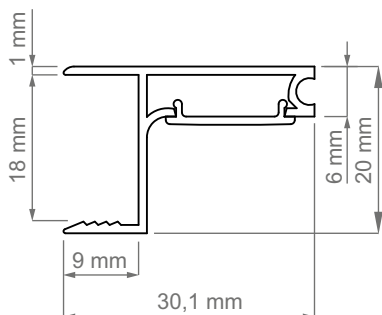
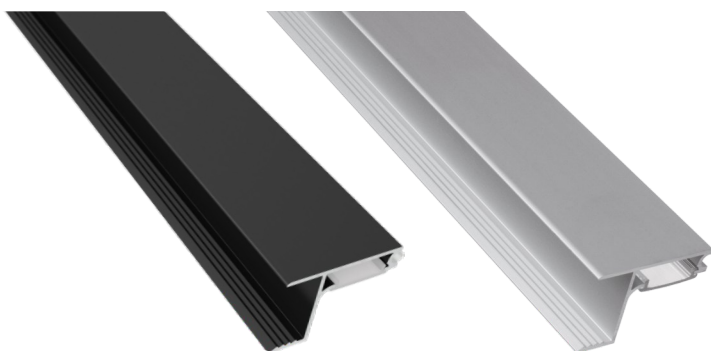
Profile color / Profilfarbe

Czarny

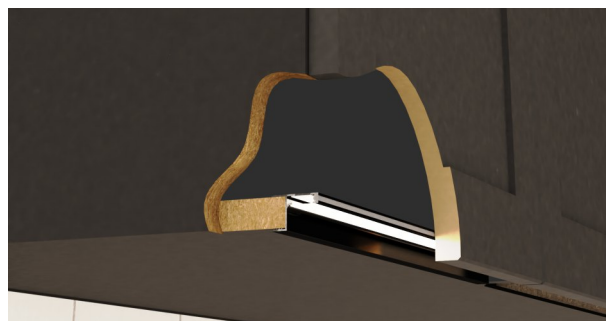
Black / Schwarz

Aluminium

Aluminum / Aluminium



- 1** PŁYTA MEBLOWA WIENIEC DOLNY SZAFKI
FURNITURE BOARD BOTTOM PANEL OF THE CABINET
/ MÖBELPLATTE BODENPLATTE DES KLEIDERSCHRANKS
- 2** FRONT BEZUCHWYTOWY SZAFKI
HANDLELESS FRONT OF THE CABINET
/ SCHRANKFRONT GRIFFLOS
- 3** PROFIL
PROFILE / PROFIL
- 4** TAŚMA LED
LED STRIP / LED-STREIFEN
- 5** KLOSZ
PROFILE DIFFUSER / ABDECKUNG
- 6** DYSTANS (WAŁEK GUMOWY)
DISTANCE [RUBBER ROLLER] / ABSTAND (GUMMIROLLE)



Indeks Index / Artikelnummer	Kod EAN Code EAN / EAN-Code	Kolor colour / Farbe	Klosz Cover / Abdeckung	Długość profilu Profile length / Profillänge
PROFIL-SKYLINE-N-OP-3M-C	5908293410023	Czarny Black / Schwarz	Opal	3 m
PROFIL-SKYLINE-N-TR-3M-C	5900652149186	Czarny Black / Schwarz	Transparentny Transparent / Transparent	3 m
PROFIL-SKYLINE-N-OP-3M-W	5900652149179	Aluminium Aluminum / Aluminium	Opal	3 m
PROFIL-SKYLINE-N-TR-3M-W	5908293410047	Aluminium Aluminum / Aluminium	Transparentny Transparent / Transparent	3 m
PROFIL-SKYLINE-N-OP-2M-C	5908293410016	Czarny Black / Schwarz	Opal	2 m
PROFIL-SKYLINE-N-TR-2M-C	5908293410030	Czarny Black / Schwarz	Transparentny Transparent / Transparent	2 m
PROFIL-SKYLINE-N-OP-2M-W	5900652149155	Aluminium Aluminum / Aluminium	Opal	2 m
PROFIL-SKYLINE-N-TR-2M-W	5900652149162	Aluminium Aluminum / Aluminium	Transparentny Transparent / Transparent	2 m