



SPECIFICATIONS

Model No.		PRLR-100
Dimensions	Length	327mm
	Width	172mm
	Height	218mm
Weight		About 14kg

CHARACTERISTICS

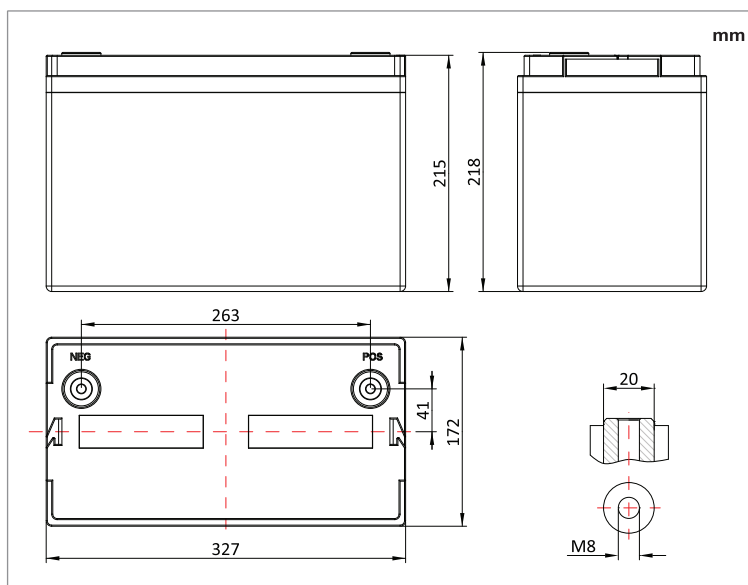
Nominal Voltage	12.8V
Nominal Capacity	100Ah
Nominal Energy	1280Wh
Internal Impedance	≤10mΩ
Charge Voltage	14.4V
Discharge Cut-off Voltage	10V
Standard Charge Current	20A
Max. Charge Current	100A
Standard Discharge Current	60A
Max. Discharge Current	100A
Peak Discharge Current	200A (3S)
Bluetooth	Optional
Operating Temperature	Charge 0°C ~ +50°C
	Discharge -20°C ~ +55°C

Note: Maximum 4 batteries in series (total voltage 12V-48V)

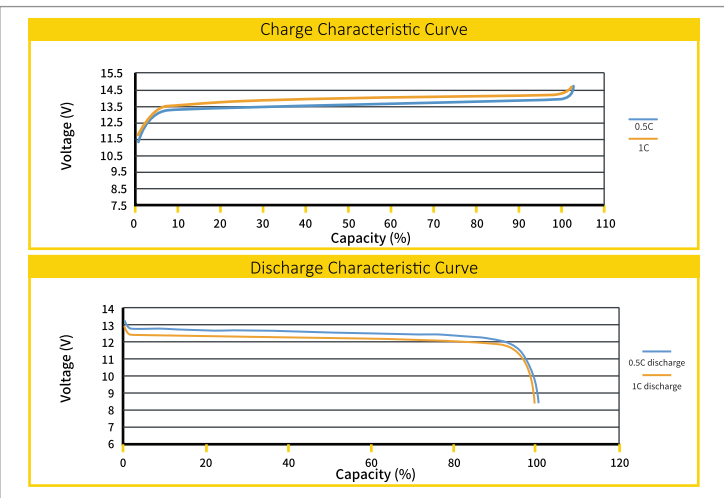


PRLR-100

DRAWINGS

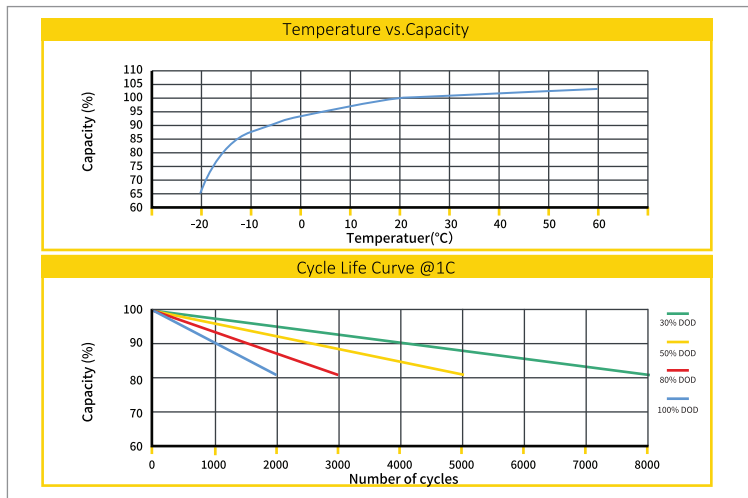


DISCHARGING GRAPH



CERTIFICATIONS

UN38.3 CE



Poweroad (Xiamen) Renewable Energy Technology Co., Ltd.

Office: 7/F Haiyun Building, No. 16, Haishan Road, Xiamen, Fujian, China, 361013
 Factory: Rongyuan Industrial Park, No. 8, Xiayang Road, Haicang District, Xiamen, Fujian, China, 361028

+86 592 5558102
 sales@poweroad.com
 www.poweroad.com

POWERROAD reserves the right to modify the specifications and features without prior notice.